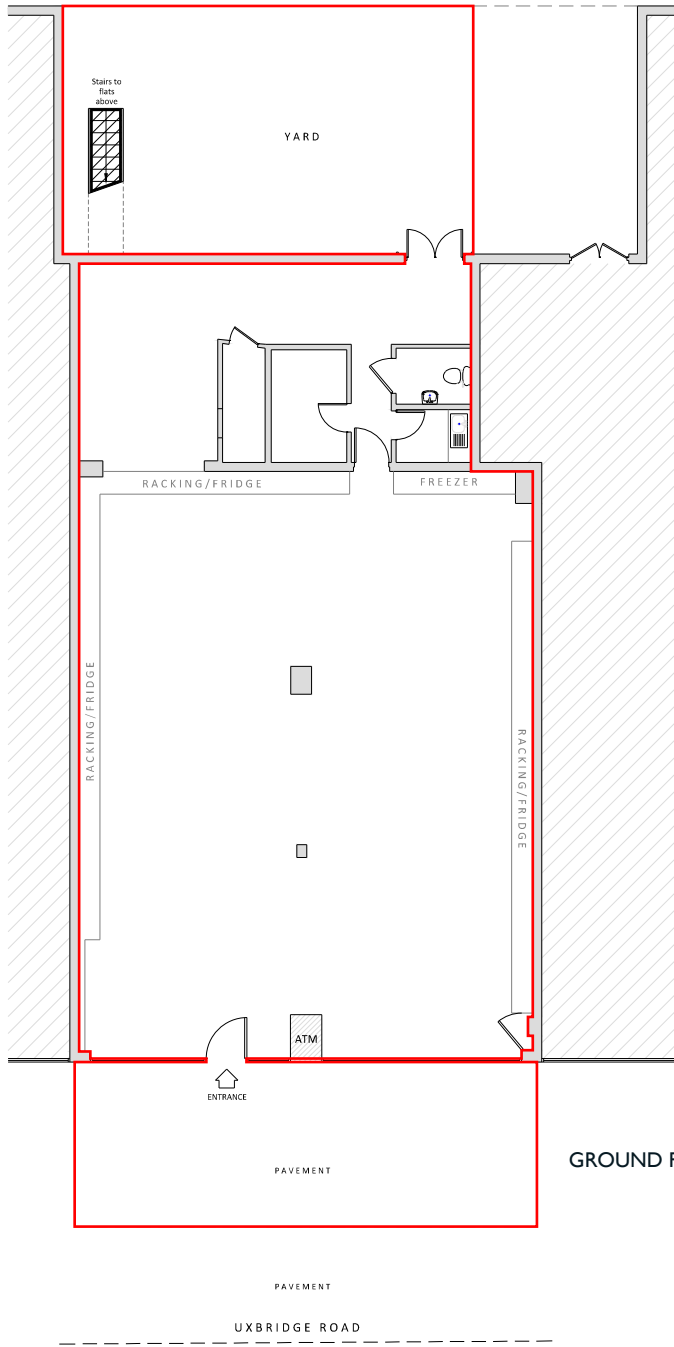
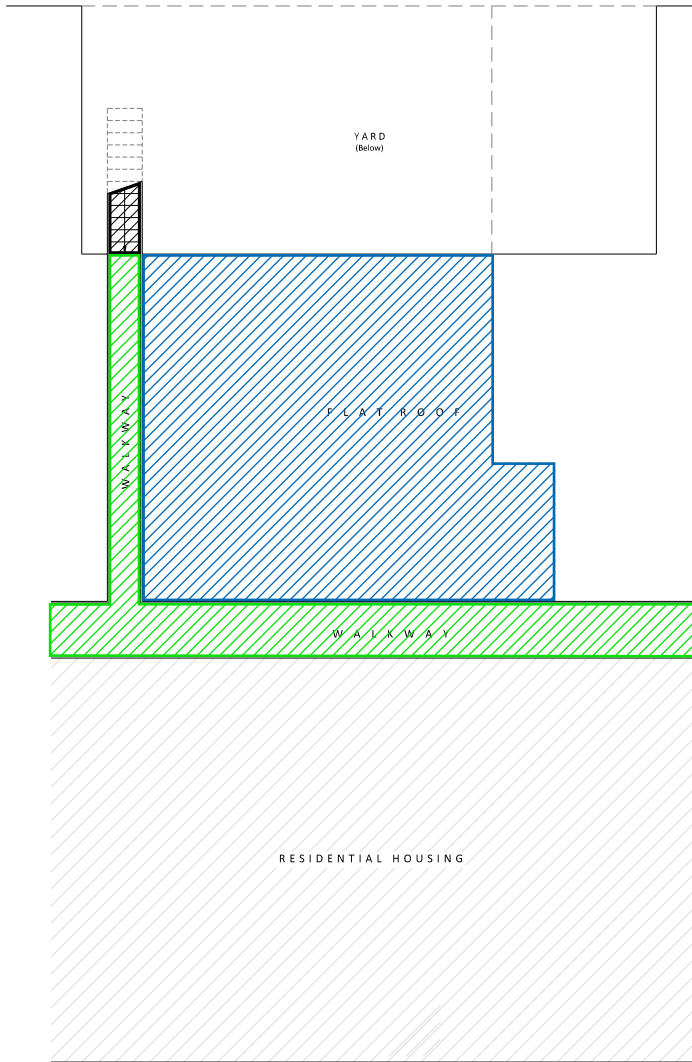


COMMUNAL PASSAGE



GROUND FLOOR



FIRST FLOOR



OFFICE: 0203 637 0150

EMAIL: sales@leaseplanners.co.uk

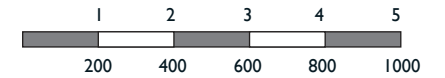
DRAWING TITLE:

5-6 MONEYHILL PARADE
RICKMANSWORTH
HERTFORDSHIRE
WD3 7BQ

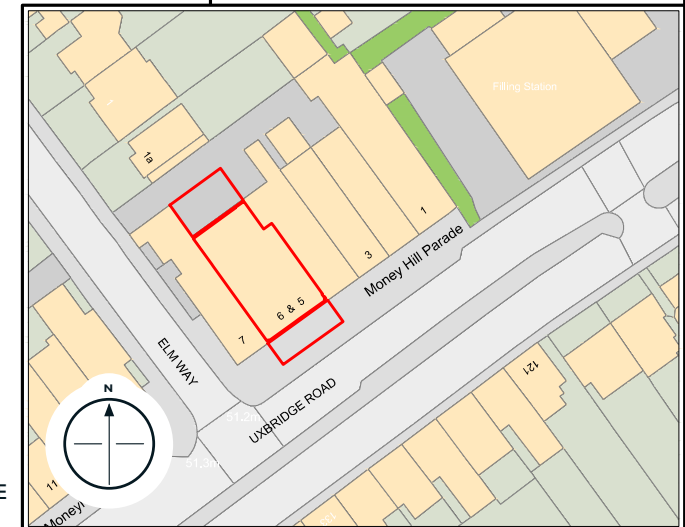


DATE 22ND JANUARY 2018

Scale: 1:200 at A4



SCALE: For the plan to be to scale, the above scale bar must measure correct when printed (for example 5cm)



SITE PLAN SCALE
1:1250